

## Details for Acoustic Sleeper™ Types A and B Installation: Frame Construction

### Inverted Plans of Subfloor Panels:

Panels, 4' x 8', are shown inverted with pads and strips to indicate desired typical layouts

- Fig. 1: For wood framing. Typical plan detail has pads in the field at a maximum of 24" o.c. along the panel length aligned with framing members, and maximum 12" o.c. across the panel width for 24" o.c. span-rated wood structural panels with pads at 8" o.c. at trailing square edge.
- Fig. 2: Optional plan for wood framing at mass timber floors with 44" strip at trailing square edge.

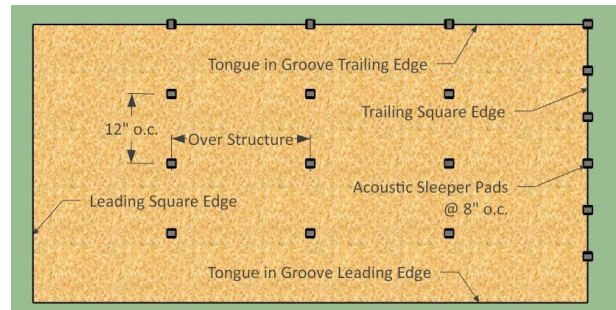


Figure 1: Inverted view of standard panel

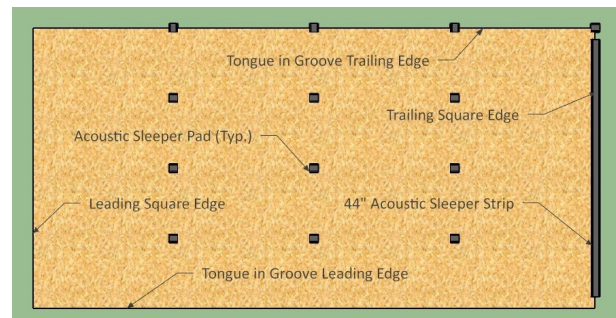


Figure 2: Inverted view with strip

### Partitions in Wood Framing

Typical Section Details for supporting partitions in wood frame

- Fig. 3: Typical detail for load-bearing partitions, shear walls, and fire-resistance-rated walls. Place a continuous plywood or OSB bearing strip under partition.

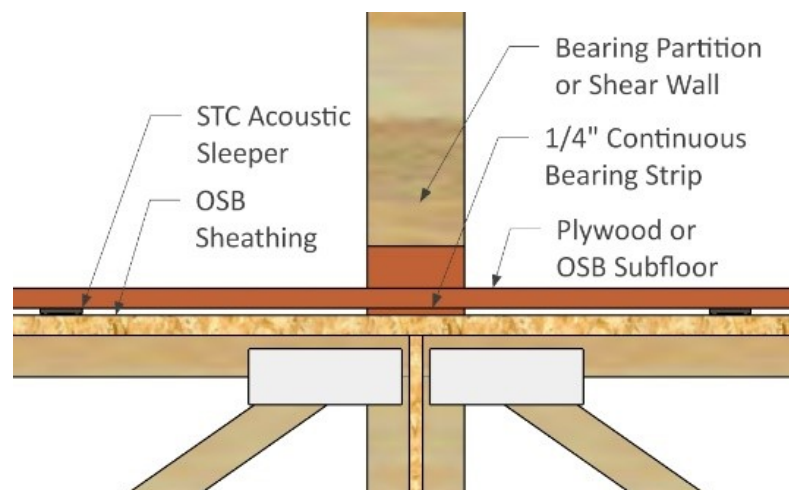


Figure 3: Typical load-bearing partition



## STC SOUND CONTROL

- Fig. 4: Typical detail for non-load-bearing partitions. No plywood or OSB bearing strip required unless partition is fire-resistance-rated. Avoid loads on partitions.

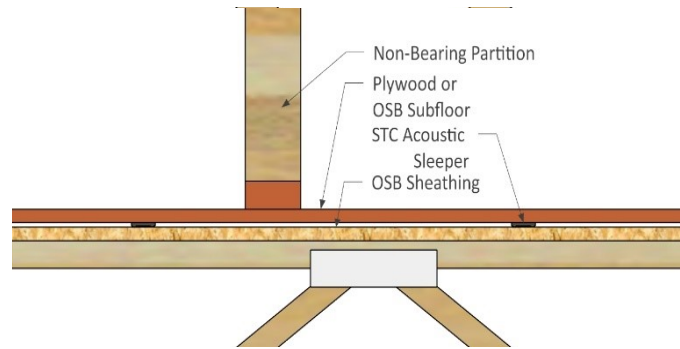


Figure 4: Section at non-bearing partition

- Fig. 5: Typical Breezeway section detail. Drop wood panel subfloor elevation for concrete flush with subfloor at wood framing.

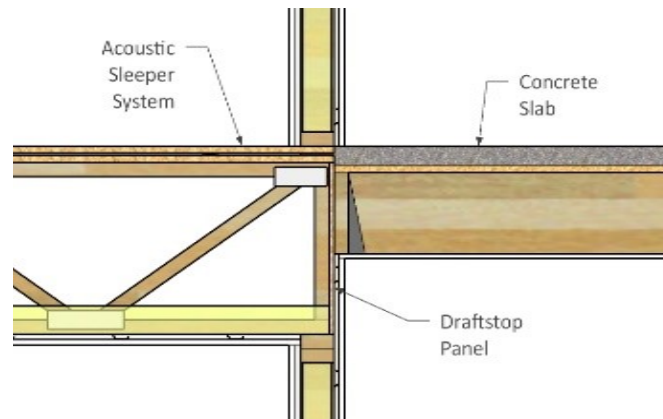


Figure 5: Typical section at Breezeway

- Fig. 6: Typical section detail for non-load-bearing demising partitions parallel to structural members where draftstops are required.

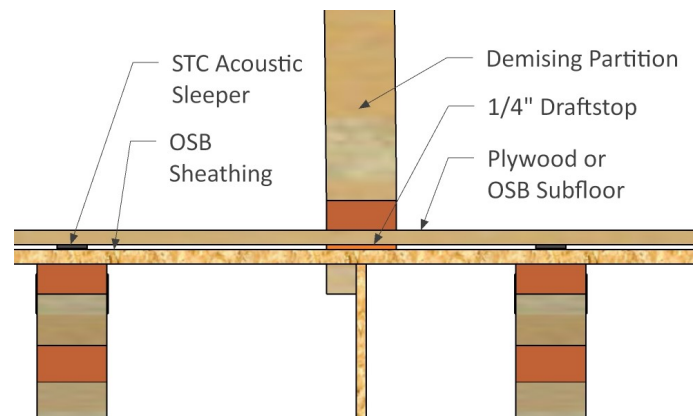


Figure 6: Typical section at draftstop

August 1, 2020  
Paul L. Battaglia